

WZMACNIACZE

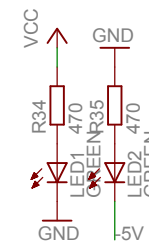
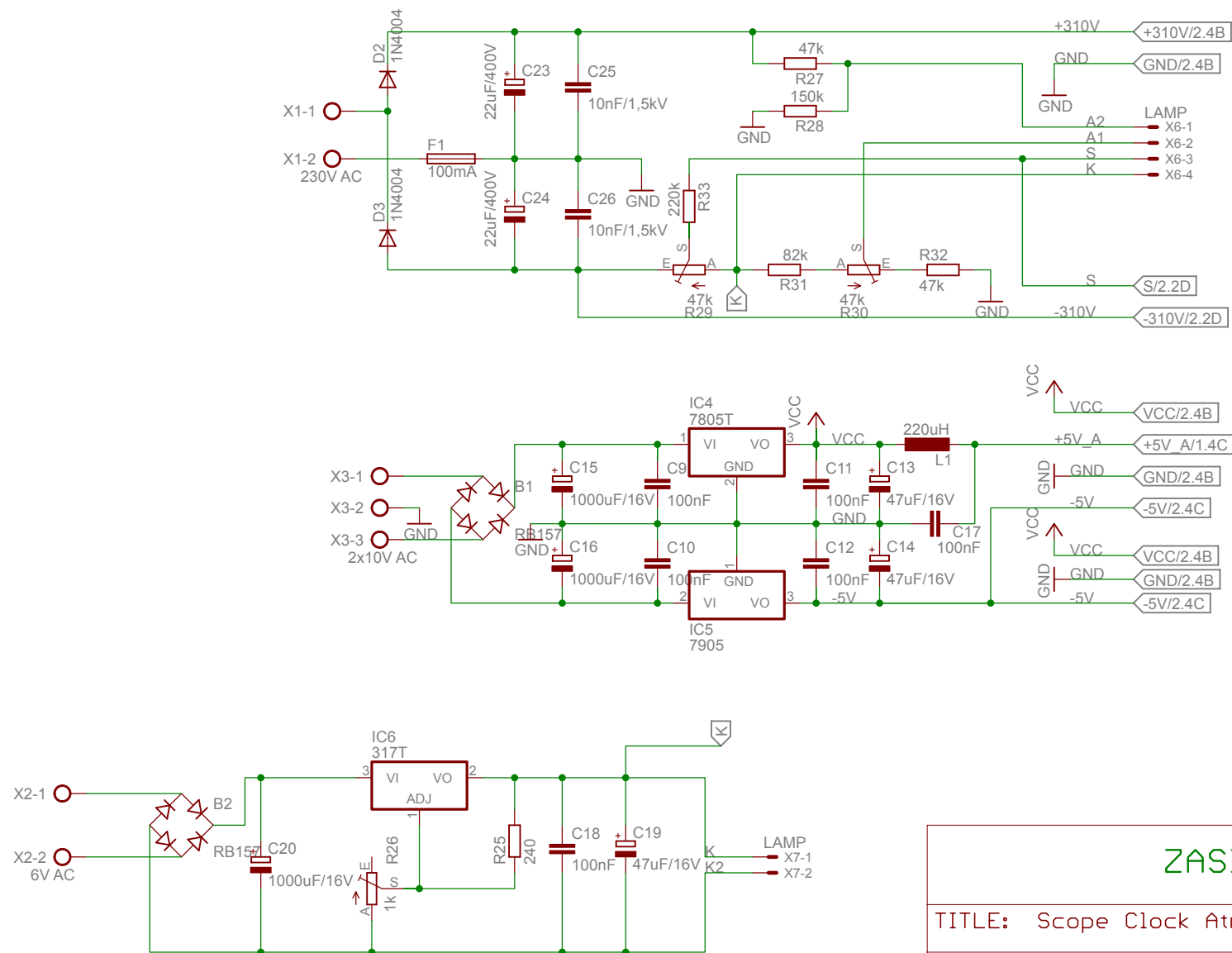
TITLE: Scope Clock Atmega8

Document Number:

REV:
2.1

Date: 2010-09-11 21:48:48

Sheet: 2/4



ZASILACZ

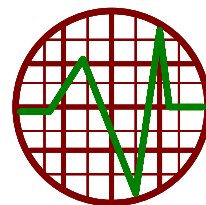
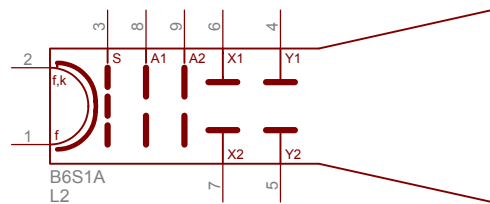
TITLE: Scope Clock Atmega8

Document Number:

REV:
2.1

Date: 2010-09-11 21:48:48

Sheet: 3/4



Lampa RFT B6 S1

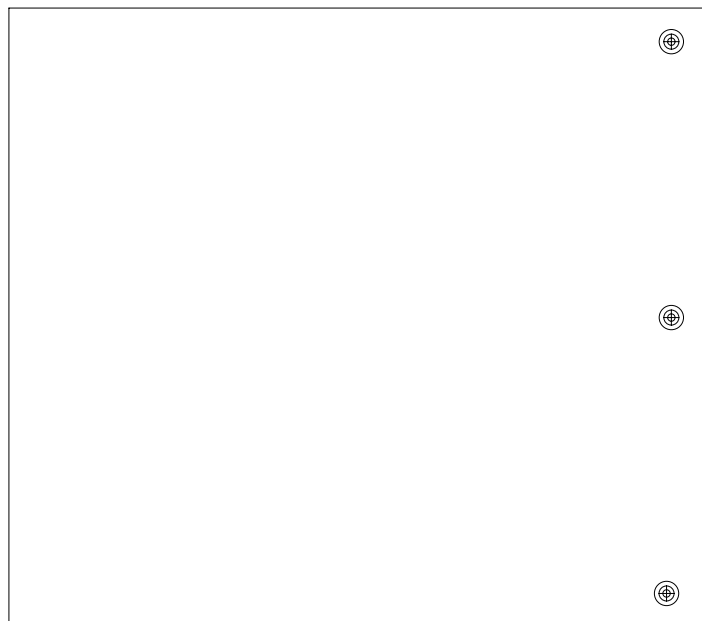
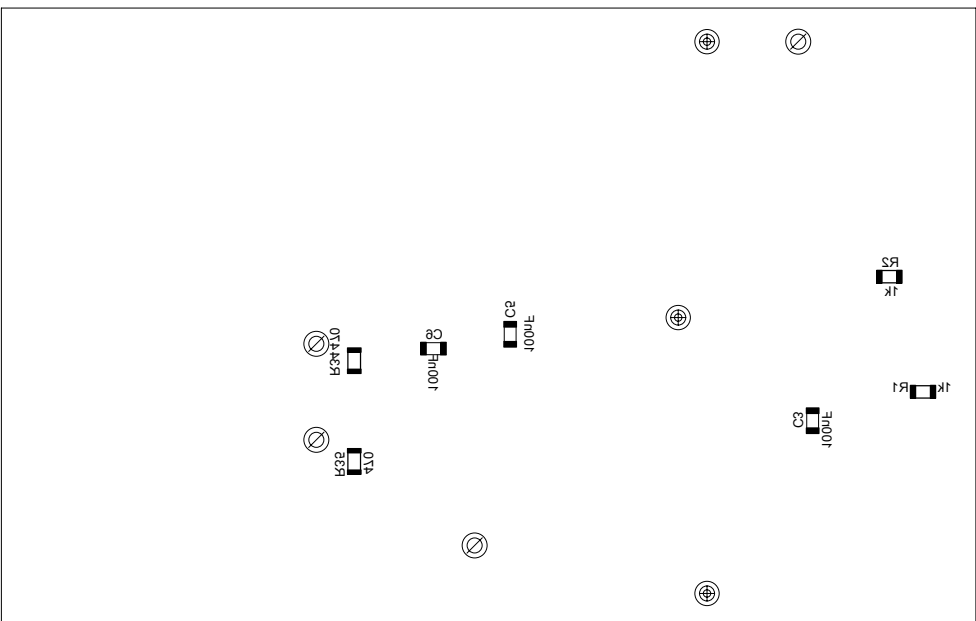
TITLE: Scope Clock Atmega8

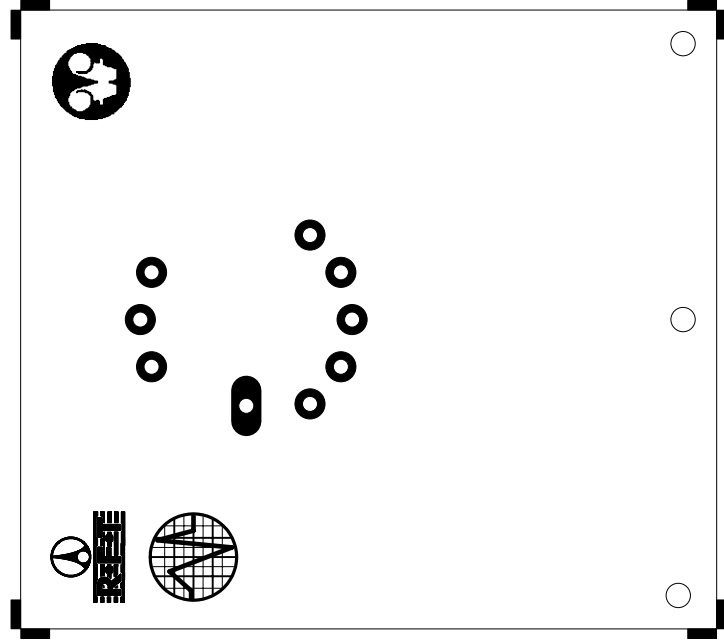
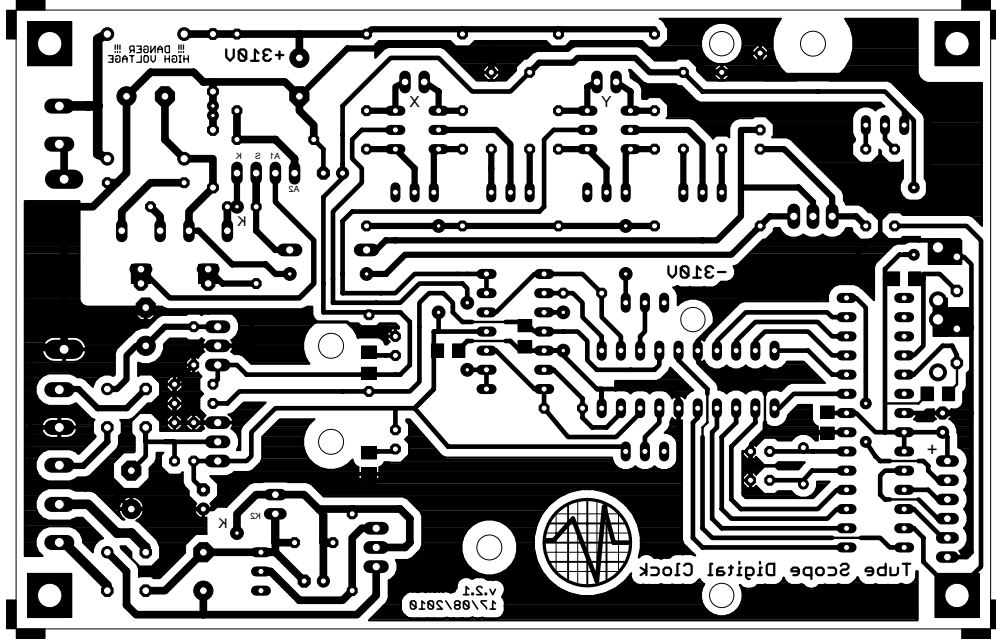
Document Number:

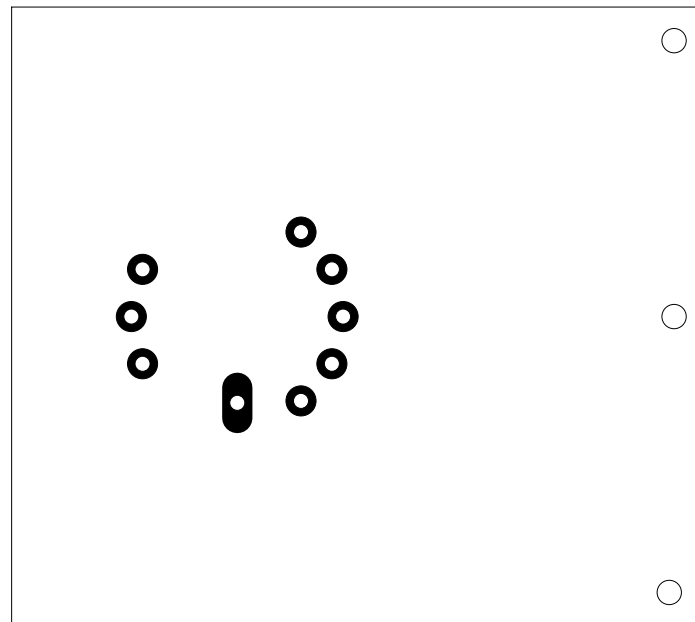
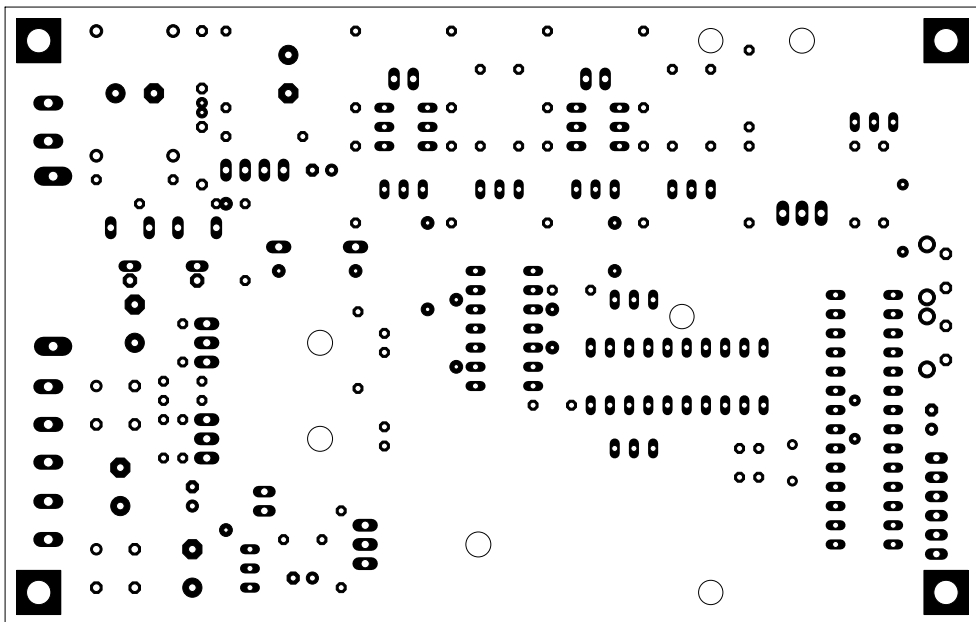
REV:
2.1

Date: 2010-09-11 21:48:48

Sheet: 4/4







	ilość		wartość uwagi
F1	1	BEZBIECZNIK+OPRAWKA	100mA DO DRUKU
L1	1	CEWKA	220uH
D2,D3	2	DIODA	1N4007
D1	1	DIODA	BA157
C15,C16,C20	3	KONDENSATOR	1000uF/16V
C3,C5,C6,	3	KONDENSATOR	100nF SMD
C9,C10,C11,C12,C17,C18	6	KONDENSATOR	100nF
C25,C26	2	KONDENSATOR	10nF/3kV
C1,C2,C7,C8	4	KONDENSATOR	22pF
C23,C24	2	KONDENSATOR	22uF/400V
C4,C13,C14,C19	4	KONDENSATOR	47uF/16V
Q1	1	KWARC	14,7456MHz
IC1	1	MIKROKONTROLER	ATMEGA8-P
B1,B2	2	MOSTEK	RB157A
R3,R4,R5,R7	4	POTENCJOMETR	10k DO DRUKU TRIM_EU-RJ9W
R6,R8,R26	3	POTENCJOMETR	1k DO DRUKU TRIM_EU-RJ9W
R29,R30	2	POTENCJOMETR	47k DO DRUKU izolowany
R25	1	REZYSTOR	240
R21	1	REZYSTOR	820
R14,R20	2	REZYSTOR	1,8k
R24	1	REZYSTOR	100k
R11,R12,R17,R18	4	REZYSTOR	10k
R9,R10,R15,R16,R28	5	REZYSTOR	150k
R1,R2	2	REZYSTOR	1k SMD
R22	1	REZYSTOR	1k
R13,R19	2	REZYSTOR	2,7k
R33	1	REZYSTOR	220k
R27,R32	2	REZYSTOR	47k
R23,R31	2	REZYSTOR	82k
IC4	1	STABILIZATOR	7805T
IC5	1	STABILIZATOR	7905T
IC6	1	STABILIZATOR	LM317
S1,S2	2	SWITCH	DO DRUKU
Q2	1	TRANZYSTOR	BF871
T1,T2,T3,T4	4	TRANZYSTOR	MPSA42
T5	1	TRANZYSTOR	MPSA92
IC2	1	UKŁAD	AD7528
IC3	1	UKŁAD	TL074P
X1,X2	2	ZŁĄCZE	ARK-2 DO DRUKU
X3	1	ZŁĄCZE	ARK-3 DO DRUKU
	1	PODSTAWEK	DIP14
	1	PODSTAWEK	DIP28
	1	PODSTAWEK	DIP20
I1	1	LAMPA	B6S1 OSCYLOSKOPOWA